

CERTIFICATE OF LOCATION OF GOVERNMENT CORNER

EAST QUARTER _____ Corner of Section 29 , Township 107N , Range 39W

5th Principal Meridian, State of Minnesota, County of MURRAY

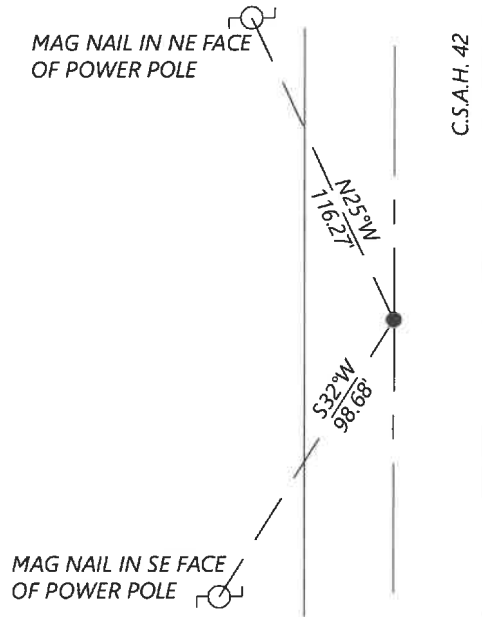
At the corner location shown on the sketch:

On 8/27/2020 found a SURVEY PLUNGER AND DISK SET FLUSH WITH ASPHALT
DATE

left monument as found lowered monument removed monument (explain)

On _____ placed a _____
DATE

SKETCH OF REFERENCE TIES



N.T.S.

Statement of evidence for this corner location is on back of this page.

I hereby certify that this document was researched and prepared by me or under my direct supervision and that I am a licensed Land Surveyor under the laws of the State of Minnesota.

Signature [Handwritten Signature]

Date 6/16/2021 License No. 45874

Title:

- Land Surveyor Professional Engineer
- County Surveyor County Engineer

OFFICE OF THE COUNTY RECORDER

County of Murray

I hereby certify that this document was filed in the Co.

Recorder's office at _____ .M. on the _____ day of _____ A.D. 20

County Recorder [Handwritten Signature: Karen Brown]

by JUN 22 2021, Deputy

DOCUMENT NO. _____

Statement of Evidence:

East Quarter Corner of Section 29, Township 107 North, Range 39 West, 5th Principal Meridian, Murray County, Minnesota.

NO GLO RECORDS FOUND.

NOV. 1904 SURVEY RECORD FOR SECTION 28 SHOWS A STONE AT THE CORNER.

1986 HWY DEPT. RECORDS SHOW AT STONE AT THE CORNER.

NOV. 2007 A SURVEY IN SECTION 29 BY PERRY ZIESKE SHOWS A FOUND IRON MONUMENT AT THE CORNER.

*APRIL 2011 CORNER CERTIFICATE BY LS 43844 SHOWS A SET SURVEY SPIKE WITH SEAL #43844 USING TIES FROM ZIESKE LAND SURVEYING. HE LISTS THE MURRAY COUNTY COORDINATES (1996 ADJ.) AS
N: 171365.94 E: 558883.24.*

SEPT. 2020 WESTWOOD PROFESSIONAL SERVICES SEARCHED AND FOUND SURVEY SPIKE AND DISK. COORDINATES FIT WITH 2011 CORNER CERTIFICATE. ACCEPTED FOUND MONUMENT AND SET NEW TIES.

Analysis of the recovered data, field evidence and survey measurements, indicates that the monument found is the correct perpetuation of this corner. For additional information concerning this corner please contact Westwood Professional Services.